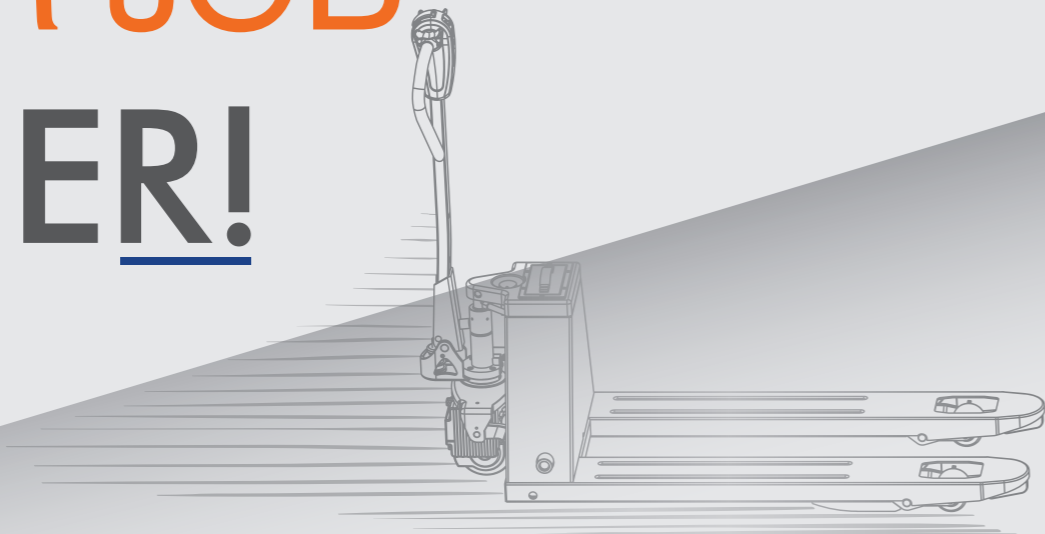


**AIOLOS**  
**LIFTS**

**| MAKE**  
**YOUR JOB**  
**EASIER!**



**ERT15H**  
**& PPT18H**

Ηλεκτρικά & Ημι-ηλεκτρικά  
παλετοφόρα



**AIOLOS**  
**LIFTS**

Λεωφ. Τατοΐου 133, 136 77, Αχαρνές  
Τηλ.: +30 210 800 1507-8  
Fax.: +30 210 800 1503  
e-mail: info@aioloslifts.gr  
web: www.aioloslifts.gr

[www.aioloslifts.gr](http://www.aioloslifts.gr)

# CHARACTERISTICS

Closer look into

# SMART FUNCTION

Notes: "★" – Available with different options.

**Horn**

**Emergency reverse button**

**Forward/reverse butterfly switch**

**Lifting/ Lowering**

**LCD Screen**

- Battery indicator with hour meter
- Error code display
- Recharge Alert

**Multi-function Handle (Full Electric)**

**Multi-function Ergonomic Handle (Semi-electric)**

**Lithium battery pack**

**BUILT TO WORK 24/7 FULL-ELECTRIC**

**★ Tandem/Single PU wheel**

**★ Protection cover**

**★ Manual Lifting/Lowering (Quick Lift)**

**★ Electric Lifting/Lowering**

**★ Fast Charger option(2hrs)**

**Integral Forks**  
Ideal design for closed pallet(single load wheel)

**SMART FUNCTION 01**

**Turtle Speed**  
Horn Remains Pressed & Forward 2 times

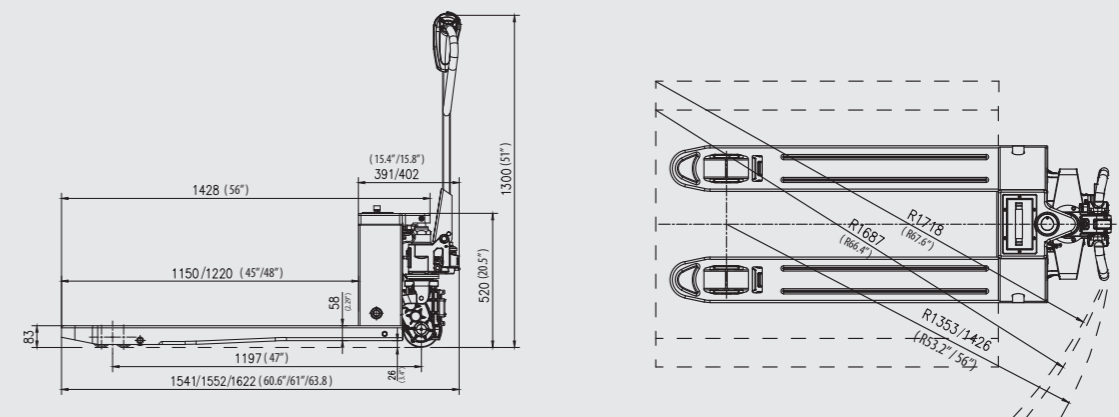
**SMART FUNCTION 02**

**Up-Right Drive**  
Reverse Button & Forward Throttle Remain Pressed, Power On

**SMART FUNCTION 03**

**Engineering Mode (Brake Release)**  
Horn Remains Pressed, Power On

- ⚠ In up-right drive mode, vehicle will move when handle is operated at any position. Please avoid misoperation.
- ⚠ Brake release mode is only for emergencies, not allowed for vehicle with normal conditions.



		PPT18H	PPT18HQ	EPT15H	EPT18H	PPT40H	PPT40HQ	EPT33H	EPT40H
<b>CHARACTERISTICS</b>									
1.1	Capacity	kg 1800	1800	1500	1800	lb 4000	4000	3300	4000
1.2	Load center	mm 600	600	600	600	in 23.6	23.6	23.6	23.6
1.3	Standard overall fork width	mm 550/685	550/685	550/685	550/685	in 21.6/27	21.6/27	21.6/27	21.6/27
1.4	Fork length	mm 1150/1220	1150/1220	1150/1220	1150/1220	in 45/48	45/48	45/48	45/48
1.5	Overall length	mm 1552/1622	1552/1622	1552/1622	1552/1622	in 61/63.8	61/63.8	61/63.8	61/63.8
1.6	Overall height (with tiller)	mm 1300	1300	1300	1300	in 51	51	51	51
1.7	Rear body width	mm 550/685	550/685	550/685	550/685	in 21.6/27	21.6/27	21.6/27	21.6/27
1.8	Minimum turning radius	mm 1353/1426	1353/1426	1353/1426	1353/1426	in 53.2/56	53.2/56	53.2/56	53.2/56
<b>PERFORMANCE</b>									
2.1	Max. Traveling speed	laden km/h 3.5	3.5	4	4	mph 2.2	2.2	2.5	2.5
		unladen km/h 5	5	5	5	mph 3.1	3.1	3.1	3.1
2.2	Gradeability	laden % 5	5	6	6	% 5	5	6	6
		unladen % 20	20	20	20	% 20	20	20	20
2.3	Traveling	kw DC 0.75 Brushless	DC 0.75 Brushless	DC 0.75 Brushless	DC 1.00 Brushless	kw DC 0.75 Brushless	DC 0.75 Brushless	DC 0.75 Brushless	DC 0.85 Brushless
2.4	Lifting	kw Hydraulic	<b>QUICK LIFT</b>	DC 0.8	DC 0.8	kw Hydraulic	<b>QUICK LIFT</b>	DC 0.5	DC 0.5
<b>BATTERY</b>									
4.1	Voltage	v 48	48	48	48	v 48	48	48	48
4.2	Capacity/type	Ah 10 Ah Lithium	10 Ah Lithium	10 Ah Lithium	10 Ah Lithium	Ah 10 Ah Lithium	10 Ah Lithium	10 Ah Lithium	10 Ah Lithium
<b>BRAKE TYPE</b>									
5.1	Travel brake		Regenerate	Regenerate	Regenerate		Regenerate	Regenerate	Regenerate
5.2	Brake		Electromagnetic	Electromagnetic	Electromagnetic		Electromagnetic	Electromagnetic	Electromagnetic
<b>CONTROLLER</b>									
6.1	Controller		STAXXB1501	STAXXB1501	STAXXB1501		STAXXB1501	STAXXB1501	STAXXB1501